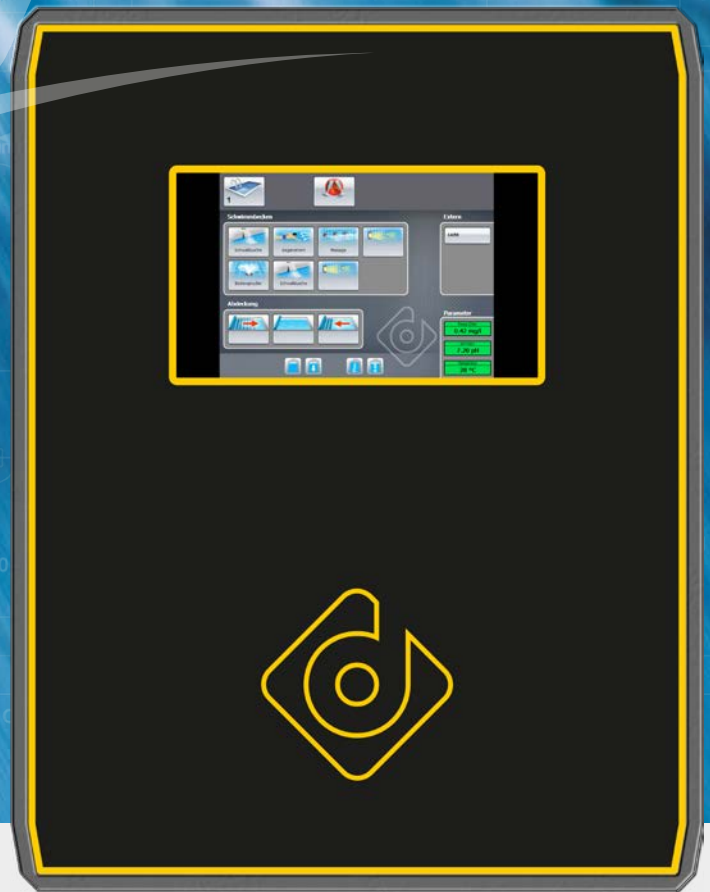


Fully equipped pool control system,
completely configured.

ready



dinotec NET+ ready

More functions, more conveniences,
superior technology.

Everything included! Features and advantages at a glance



dinoRemote
Secure remote control/maintenance via smartphone, tablet, etc.



Heating: measurement of pool temperature and control of heating circulation pump/3-way valve.



Shock chlorination - triggered via time switch or manually



Party mode: water treatment is carried on also outside the set hours of operation, thereby ensuring an optimum water quality.



Best water quality, measurement and control of all hygiene parameters.



Holiday mode: energy-saving operation. Activation and automatic return to normal operation via calendar feature.



Large colour trend graphs for measuring parameters



Solar temperature control for heating the pool water via solar absorber systems.



Filter control with integrated time switch for filter runtimes and backwash.



Solar temperature control for cooling the pool water over night via solar absorber systems.



Peristaltic dosing pumps, bus controlled, with wear-free stepper motor.



Graphic display, information visible at a glance, intuitive operation.



Peristaltic dosing pumps with integrated container level measurement (in cm). Alarm via system bus.



Dosing time control to prevent uncontrolled dosing.



ECO mode (standby mode/night mode)



Storing of measurement data and setpoint adjustments.



Expandable to meet future requirements.



Connection to PC, routers, printers; direct data transmission via DSL possible.

More individuality, more conveniences: optional features



Second, larger touch screen for (remote) control of your entire system from your indoor pool or any other room.



Surge tank control for pools with overflow gutter. With hydrostatic logging of measured values for level.



You also own a whirlpool?
No problem with the dinotecNET+ ready measuring and control technology for a second pool circulation.



Control of overflow gutter cleaning.
Input for key switch.



Control your attractions, such as counter current systems, massage nozzles or lighting with the attraction control for up to three attractions and floodlights up to 600 W total power (only together with second touch screen).



Filter backwash manual, with piston valve or automatic 6-way valve.



Control up to 3 external attractions such as garden lighting, fountains, etc.



Filter pump 230/400V, ECO, frequency converted control.



Connection to a facility management system via Modbus TCP or EIB/KNX



Also available as Watercom version, i.e. space-saving, pre-assembled complete system for water treatment



Make use of flocculation to improve the filtration performance! Flocculant dosing station, bus-controlled, 3 – 3000 ml/h.



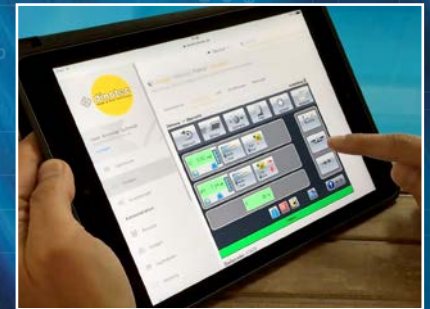
Also available as Watercom version, i.e. space-saving, pre-assembled complete system for water treatment

ready

Simply enjoy the best water!



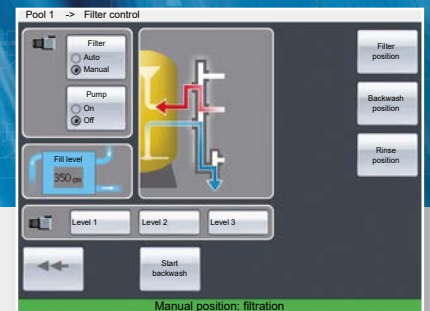
d i n o t e c b u s s y s t e m



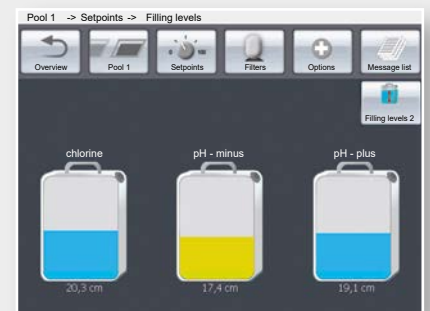
Access for operation and maintenance from anywhere in the world, as if standing right in front of it.

For outdoor and indoor pools with a volume up to about 150 m³

Wired ready for connection and pre-assembled on a plastic wall mounting plate with rapid assembly kit



Functions, workflows and settings are clearly and concisely presented.



The colouring of the level indicator allows you to identify the current state at a glance:
Blue means: everything is alright.
Yellow means: Reserve, a refilling is required.
Red means: Warning, container is empty.

Full control over the water quality

"ready" means that you receive a perfectly matched, pre-configured system for control of your swimming pool. Complex system configurations belong to the past. Due to modern bus technology, the expenses involved in the installation of the dinotecNET+ ready are kept to a minimum. The "intelligent system" is superior to conventional systems in respect of technology, range of functions and modern conveniences. At the same time, the system provides a maximum scope for individualisation. The system permits a free choice of the water care method, only the appropriate measurement sets must be connected. In addition, it is possible to further customize the system by means of additional options.

All models include a 7" colour touch screen. Logical menu structures allow an intuitive operation. All processes and parameters are clearly and concisely presented.

Bus-controlled peristaltic dosing pumps with wear-free stepper motor are used for an accurate dosing of water care agents.

Technical data:

Mains voltage:	85 – 265 V/AC (48-63 Hz)
Power consumption:	50 VA
Protection class:	IP 65
Dimensions housing (w x h x d):	approx. 500 x 300 x 150 mm
Weight	
(wall mounting plate complete):	up to approx. 18 kg
Permissible ambient temperature:	up to +50°C
	-20°C to +65°C
Permissible humidity:	Max. 90 % at +40 °C (non-condensing)
Storage temperature pH electrode	-5 °C to + 40 °C
Control outputs:	proportional via bus
Operation:	via touch screen
Display:	Colour graphic display
Language:	multilingual
Wall mounting plate:	with rapid assembly device, pre-assembled 690 x 690 mm

Poolcare (active oxygen) measuring and control part (chlorine-free):

Measurement of oxidant:	potentiostatic with Poolcare electrode (3-electrode system)
Measuring range:	0 – 99 mg/l Poolcare
Resolution:	1 mg/l
Control type:	PID
Continuous dosing control:	adjustable
Electrode check:	by means of compensation of the slope (slope control)
Calibration:	manual by measurement of the actual content of Poolcare at the measuring cell outlet or in the pool

Chlorine measuring and control part:

Measurement of oxidant:	potentiostatic with chlorine electrode (3-electrode system)
Measuring range:	0.0 – 4.0 mg/l chlorine
Resolution:	0.01 mg/l
Control type:	PID
Continuous dosing control:	adjustable
Electrode check:	by means of compensation of the slope (slope control)
Calibration:	manual by measurement of the actual content of free chlorine at the measuring cell outlet or in the pool

pH measurement and control:

pH measurement:	via combination electrode with KCL filling
Measuring range:	0 – 14 pH
Resolution:	0.01 pH
pH control direction:	pH raise/pH reduce (switchable)
Continuous dosing control:	adjustable
Temperature compensation	Yes
Slope monitoring:	Yes
Calibration:	manual with calibration solution pH 7.0 and pH 4.0
Electrode check:	by means of a compensation of slope and zero shift, control of slope and zero point

Alarm:	alarm relay (collective alarm) with voltage-free two-way contact
---------------	--

Dosing pump:	dinodos START LEVEL BUS
Pump type:	Peristaltic dosing pump
Motor:	stepper motor, wear-free
Capacity:	max. 8.5 l/h with a counter-pressure of max. 1.5 bar (adjustable 10 - 100 %)

Filter control:	
Time switch:	weekly timer freely adjustable, max. 20 switching times
Backwash:	manual, optionally automatic (with automatic backwash device Combitrol IMPULS)

Temperature control:	
Setting range:	+5°C to +40°C
Switching output (heating):	potential-free two-way contact
Collector sensor:	optional -50 °C to +150 °C
Switching output (solar):	potential-free two-way contact
Priority circuit 'solar':	adjustable via menu



dinotec NET ready Watercom

The first compact pool and spa management system worldwide!

- ✓ Completely pre-configured
- ✓ Space-saving
- ✓ Ecological and economical
- ✓ Convenient and expandable



Your dinotec specialist dealer:

Background photo:
Water photo no. 1
Artist:
Thomas Kuhn

dinotec GmbH
Water and Pool Technology
Philipp-Reis-Str. 28
61130 Nidderau/Germany
Phone: +49 (6187) 41379-0
Fax: +49 (6187) 41379-90
E-mail: mail@dinotec.de
www.dinotec.de
www.niedrig-energie-pool.de
www.Poolpflege.info

Subject to technical changes. Errors excepted. 11/2022